

Hydrodynamic technology for better fishing

GLORIA[®]

Self-Spreading



HAMPIDJAN

www.hampidjan.com

COMPANY PROFILE

In the spring of 1934, in the middle of the Great Depression, thirteen individuals gathered a small fortune to start up an industrial venture in Reykjavík, to manufacture fishing nets, ropes and fishing long lines for the local fishing fleet. The founders named their new company HAMPIDJAN.

Since then Hampidjan has become the world leader in making and servicing quality fishing gear for trawlers and purse seiners. We operate several fishing gear entities around the world with a central manufacturing facility producing ropes, netting and trawls in Lithuania.

Our brand names for fishing gear are some of the best recognised in the world's fisheries, including the GLORIA and SWAN NET self-spreading pelagic trawls.

In the last two decades we have extended our market lead to the offshore and oil industry by developing new ground-breaking products and innovative solutions with multiple variations of our DYNICE Super-Ropes, also in high demand for various commercial, leisure, yachting, mooring, military and rescue activities.



The Hampidjan Group headquarters are located at the waterfront of the main harbor of Reykjavik Iceland in a new 6.500 m2 building.



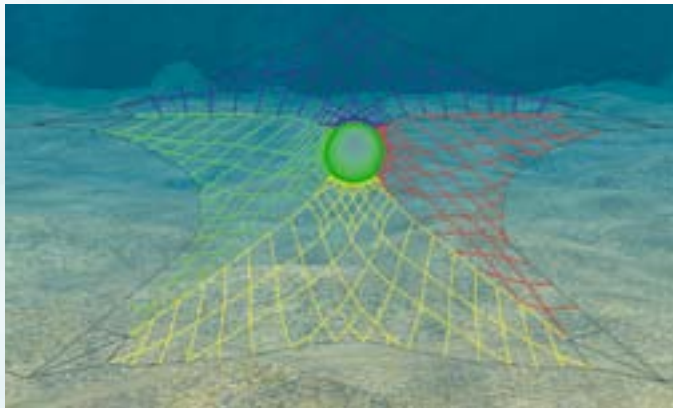
The main production facility is in Lithuania. The production range is from filaments to the most advanced tailor made fishing gear available as well as high performance ropes. The production equipment is state of the art and on floor area of 21.500 m2



GLORIA®

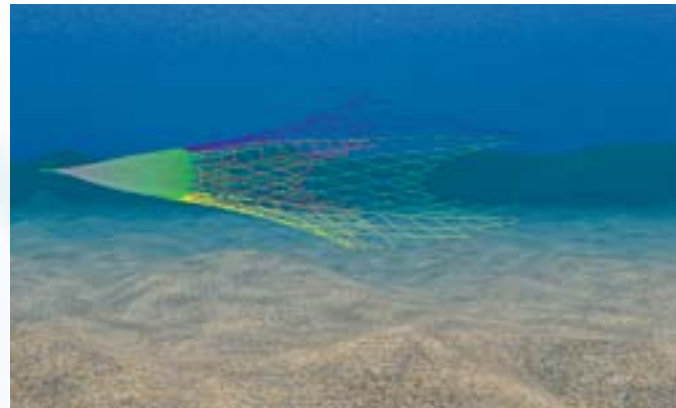
HO -High Opening

For scattered roundfish species
Horizontal Opening 1.3 times the Vertical Opening



The High Opening GLORIA Midwater trawl was originally made to fish redfish in the Irminger Sea south-west of Iceland.

The GLORIA trawl has been steadily developed through the years and is still one of Hampidjan's most successful nets. It can be manufactured in various materials like the well known PEPA and NYLEX ropes. Now the HELIX self-spreading rope has become the most popular rope, bringing cutting edge technology to the GLORIA trawl.



The GLORIA trawl is still the biggest trawl successfully ever made and operated.

The trawl has been extremely successful fishing scattered fish like the redfish in the Irminger Sea or hake in the north-west Pacific.

This trawl is now in use all over the world and ranges in size from 300m up to the giant 3600m trawl used by Faroese trawler Enniberg.

GLORIA® High Opening

For Pelagic species

Various material types



| | ** 704 | 896 | 1024 | 1408 | 1792 | 2048 | 2560 | 3072 | |
|-----------------------------|---------------|------------|-------------|-------------|-------------|-------------|-------------|-------------|-------------|
| * Opening: | 35 | 45 | 50 | 70 | 90 | 105 | 125 | 150 | m |
| * Width at sonder: | 45 | 60 | 70 | 95 | 120 | 135 | 165 | 200 | m |
| Tons per warp at 3.0 knots: | 6,1 | 6,3 | 7,6 | 8,8 | 9,9 | 11,1 | 11,6 | 12,1 | tons |
| Doors size m²: | 6,5-7,5 | 7-8 | 7,5-8,5 | 8-9 | 8,5-9,5 | 10-11 | 11-14 | 14-16 | m² |
| Preferred bridle length: | 77 | 99 | 113 | 155 | 197 | 225 | 282 | 338 | m |
| Preferred setback: | 7 | 9 | 10 | 14 | 18 | 20 | 25 | 30 | m |

*Depending on ocean current, fishing depth, trawling speed, wingend sinkers, headline cable and etc.

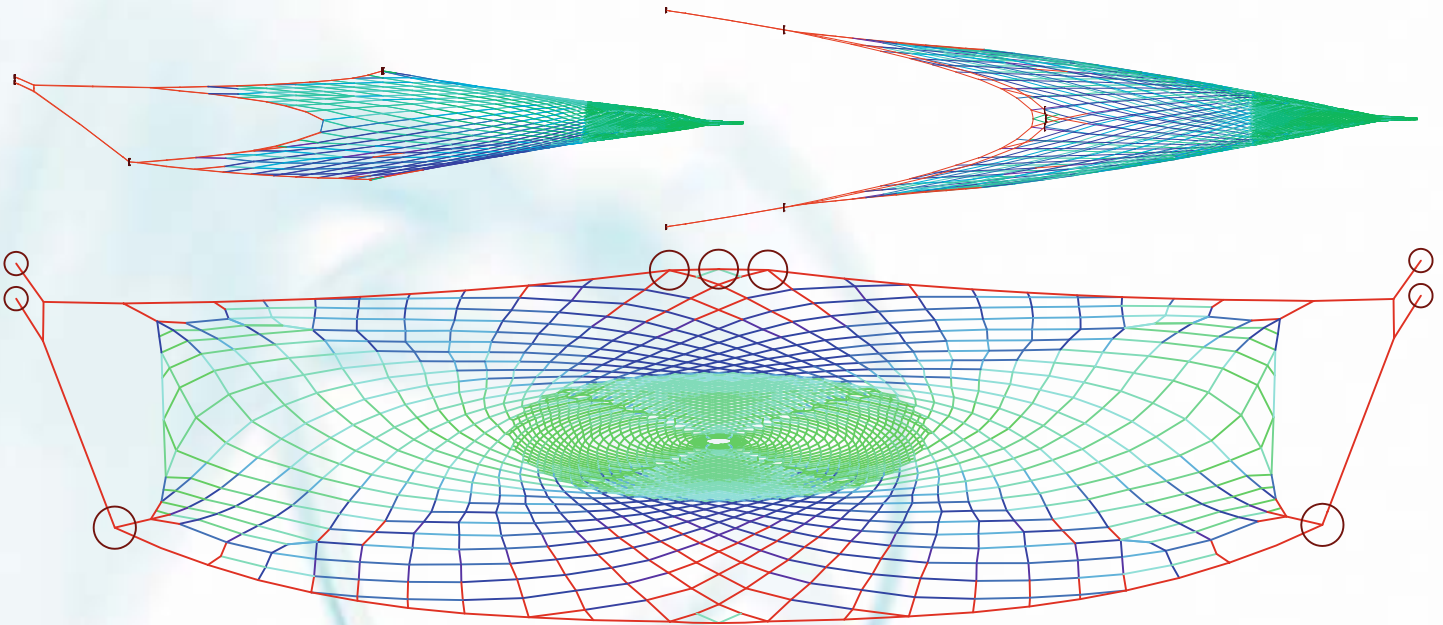
**Most Common sizes. Other sizes available.

Outstanding results have already been produced using the Gloria HO in North and South Atlantic ocean. Suitable for a wide variety of fishing grounds, the Gloria HO trawl offers skippers and trawler owners in many parts of the world better catches, bigger size fish and increased profits from their operations.

GLORIA[®]

HS -High Speed

For faster swimming pelagic species
Horizontal Opening 2-3 times the Vertical Opening



Gloria High Speed is a midwater trawl and as the name indicates, it was originally made for fishing species such as mackerel that are best caught at a high towing speeds. This design is specially good when fishing on the surface but has also proven to be effective when fishing on bottom.

This gives the trawl an edge when herding fish at high speeds. It has been used for hake on the bottom with good results on lower speed and has also showed excellent results on herring.

GLORIA[®] High Speed
For Pelagic species

Various material

Helix



PE/PA



Nylex



| | 400 | 800 | 1040 | 1280 | 1440 | **1600 | |
|-----------------------------|-------|-------|--------|--------|--------|--------|----------------|
| * Opening: | 18 | 35 | 47 | 58 | 65 | 72 | m |
| * Width at sonder: | 35 | 70 | 90 | 110 | 124 | 138 | m |
| Doors size m ² : | 3 | 6 | 8 | 9 | 10,5 | 12 | m ² |
| Bridle range: | 10-60 | 20-80 | 26-110 | 32-130 | 36-140 | 40-160 | m |
| Preferred setback: | 3 | 6 | 8 | 9,5 | 10 | 12 | m |

*Depending on ocean current, fishing depth, trawling speed, wingend sinkers, headline cable and etc.

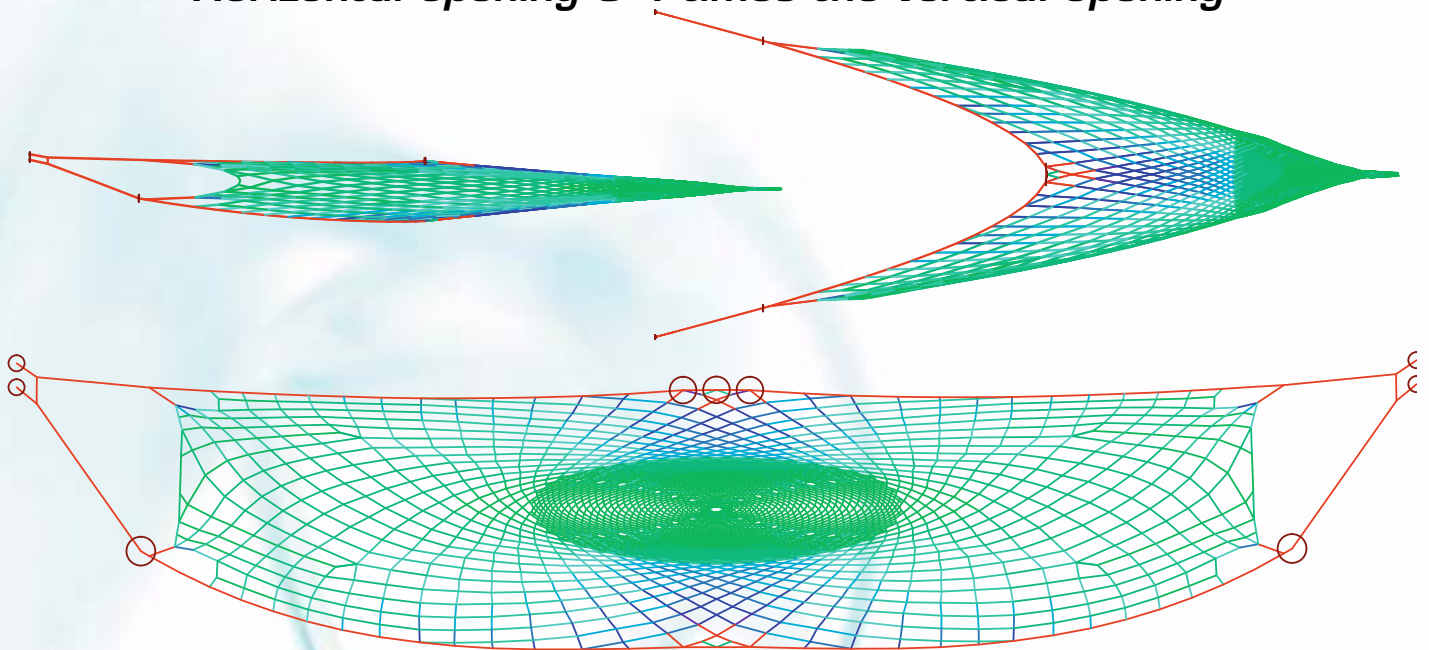
**Most Common sizes. Other sizes available.

Suitable for a wide variety of fishing grounds, the Gloria HS trawl offers skippers and trawler owners in many parts of the world better catches, larger size fish and increased profits from their operations.

GLORIA®

XW -extra Wide

For faster swimming pelagic species
Horizontal opening 3-4 times the vertical opening



Gloria XW is based on the design of Gloria HS. It is designed for fishing species such as mackerel that is best caught at a high towing speed. This design is specially good when fishing on the surface. This version has less vertical opening but more horizontal opening. The reason for designing trawl with less opening is to get cleaner catch from mackerel.

Herring often lies below the mackerel and less opening reduces catches of herring if people are only targeting the mackerel. Then there is extra with so the hearing area is wider.

The width is threefold at the sonar but four times the opening at the bosom of the sidepanels.

GLORIA® XW

For faster swimming pelagic species

Various material types



| | 1408 | 1584 | 1760 | |
|------------------------------------|------|------|------|------|
| * Opening: | 40 | 45 | 50 | m |
| * Width at sonder: | 120 | 135 | 150 | m |
| Horizontal opening at side bosoms: | 160 | 180 | 200 | m |
| Tons per warp at 4.3 knots: | 14.4 | 16.2 | 18 | tons |
| Doors size m²: | 11 | 12.5 | 14 | m² |
| Preferred bridle length: | 48 | 54 | 60 | m |
| Preferred setback: | 6.4 | 7.2 | 8 | m |

*Depending on ocean current, fishing depth, trawling speed, wingend sinkers, headline cable and etc.

Suitable for a wide variety of fishing grounds, the Gloria XW trawl offers skippers and trawler owners in many parts of the world better catches, larger size fish and increased profits from their operations.

GLORIA®

WB -Wide Body

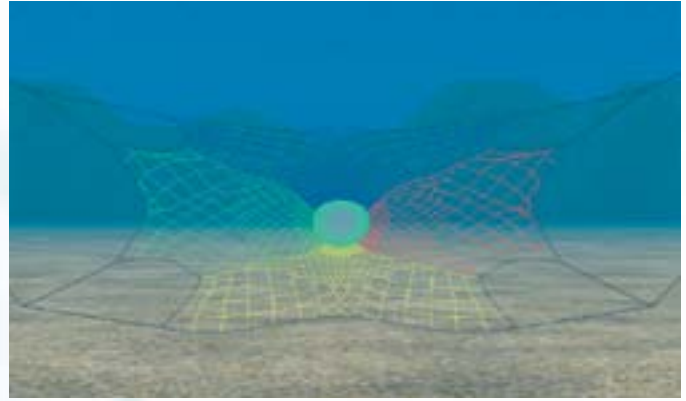
For demersal species
Horizontal Opening 3 times the Vertical Opening



The Wide Body trawl has brought new levels of performance to midwater fishing operations.

The basic concept behind the Gloria Wide Body trawl is to target fish close to the bottom, such as Alaska pollock, herring, mackerel and hake.

It has been designed for a maximum horizontal opening, allowing the skipper to take a slice of the bottom of a shoal, and avoiding the smaller fish which tend to swim at the top. Compared with the typical midwater trawl's horizontal opening of between 20 and 40% greater than its vertical opening, the Gloria Wide Body trawl opens three times as wide as it is high.



The Wide Body trawl is constructed using colour-coded, braided rope, except for the bottom panel, which is made from twelve-strand nylon.

DynIce super rope is used for the headline and the sidelines, which makes the trawl much lighter and easier to handle.

The largest possible meshes are 16 or 32 metres, depending on the size of the trawl.

A strip of small meshes is inserted into the bottom panel to boost the catch rate and strengthen the belly when the trawl is dragged on the bottom.

GLORIA® *Wide Body*
For Demersal species

Various material types

Helix



PE/PA



Nylex



| | ** 640 | 672 | 832 | 928 | 1120 | 1312 | 1536 | |
|-----------------------------|---------------|------------|------------|------------|-------------|-------------|-------------|-------------|
| * Opening: | 18 | 18 | 23 | 26 | 31 | 36 | 42 | m |
| * Width at sonder: | 53 | 55 | 69 | 77 | 92 | 108 | 127 | m |
| Tons per warp at 3.0 knots: | 6 | 7 | 8 | 9 | 10 | 12 | 13 | tons |
| Doors size m²: | 5,5-6,5 | 6,0-7,0 | 6,5-7,5 | 7,0-8,0 | 7,5-8,5 | 8,0-9,0 | 8,5-9,5 | m² |
| Preferred bridle length: | 70 | 75 | 90 | 100 | 120 | 145 | 170 | m |
| Preferred setback: | 4,5 | 5 | 6 | 6,5 | 8 | 9 | 10 | m |

*Depending on ocean current, fishing depth, trawling speed, wingend sinkers, headline cable and etc.

**Most Common sizes. Other sizes available.

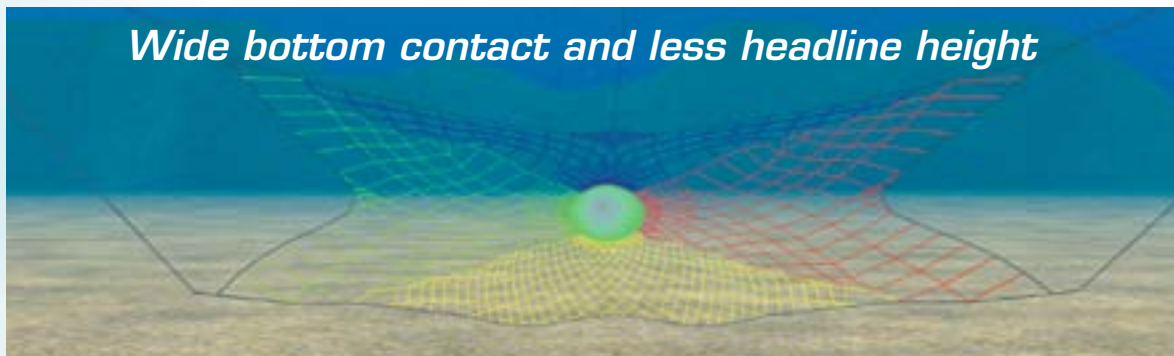
Outstanding results have already been produced using the Gloria Wide Body in Bering Sea and South Atlantic ocean. Suitable for a wide variety of fishing grounds, the Gloria Wide Body trawl offers skippers and trawler owners in many parts of the world better catches, bigger size fish and increased profits from their operations.

GLORIA®

LW - LongWing

For demersal species - wider spread
Horizontal Opening 3-4 times the Vertical Opening

Wide bottom contact and less headline height



The Long Wing Gloria was first introduced to the Bering Sea Fisheries in 2001. It has proven to be very effective and economical in both use and maintenance.

The long wings have added an increased size to a relatively small trawl, while maintaining that small trawl ease of towing. The fact that an 1120 Wide Body Gloria has been replaced by the 672 Long Wing Gloria, clearly indicates this.

As fuel prices sky rocket, fuel savings become increasingly important.

Due to its relatively small size, the trawl is easy for the crew to handle on deck.

The trawl is based on the well-known Wide Body Gloria design, with some modifications. The long wings have given the trawl a horizontal spread between the side bosoms that is 3-4 times the headline height. The trawl was made to fish where the super-wide spread makes a serious difference to catches. Bering Sea vessels currently towing the Long Wing Gloria have experienced outstanding catch rates.

GLORIA® Long Wing
For Demersal species

Various material



| | ** 624 | 672 | 736 | 832 | 928 | 1056 | |
|-----------------------------|---------------|------------|------------|------------|------------|-------------|----------------------|
| * Opening: | 18 | 18 | 20 | 23 | 26 | 31 | m |
| * Width at sounder: | 53 | 55 | 60 | 69 | 77 | 92 | m |
| Tons per warp at 3.0 knots: | 6 | 7 | 7,5 | 8 | 9 | 10 | tons |
| Doors size m ² : | 5,5-6,5 | 6,0-7,0 | 6,3-7,3 | 6,5-7,5 | 7,0-8,0 | 7,5-8,5 | m² |
| Preferred bridle length: | 70 | 75 | 82 | 90 | 100 | 120 | m |
| Preferred setback: | 4,5 | 5 | 5.5 | 6 | 6,5 | 8 | m |

*Depending on ocean current, fishing depth, trawling speed, wing tip weights, third wire tension, etc.

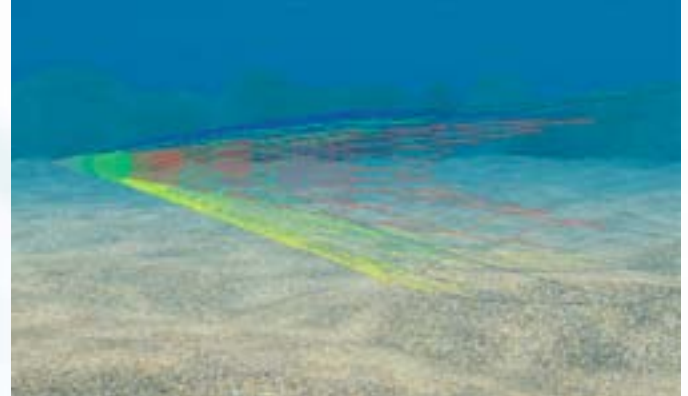
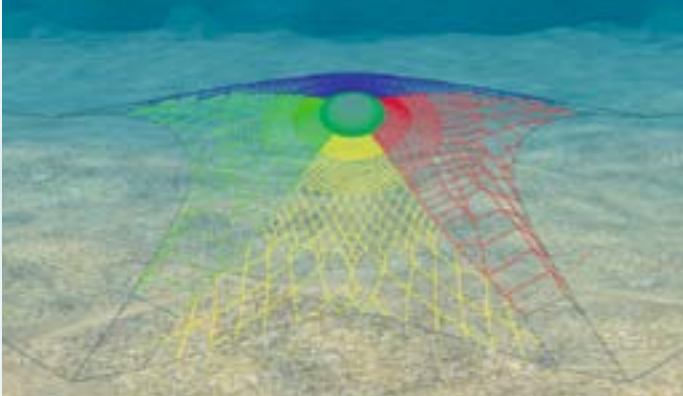
**Most Common sizes. Other sizes available.

Outstanding results have been achieved using the Long Wing Gloria in Bering Sea and North Pacific ocean. Suitable for a wide variety of fishing grounds, the Long Wing Gloria Trawl offers Skippers and Trawler owners worldwide, increased catch rates, larger fish size and increased profits from their operations.

GLORIA®

SW -Semi Wide

For slower swimming pelagic species
Horizontal Opening 1.4 times the Vertical Opening



The Semi Wide Gloria is the classic mid-water trawl in the Gloria family. It is a slow tapered 2 by 1 shape trawl made to be very efficient in either shallow and deep water and to carry big bags without collapsing.

This is an easy trawl to handle and both hauling and shooting. The trawl is relatively light to tow, which makes turning and hauling easy.

The trawl is used for fishing blue whiting, herring, mackerel and capelin in the North Atlantic and hake and pollock off the US west coast.

The trawl has been very successful and is made from Helix ropes, but is also available from both PEPA and NYLEX.

GLORIA® *SemiWide*
For Pelagic species

Various material types



| | * 1024 | 1280 | 1408 | 1792 | 2048 | 2560 | |
|--------------------------|---------------|-------------|-------------|-------------|-------------|-------------|-----------|
| * Opening: | 50-55 | 55-65 | 70-75 | 80-90 | 95-105 | 130-140 | m |
| * Width at sounder: | 75-80 | 80-90 | 100-110 | 130-140 | 150-160 | 170-180 | m |
| Length of trawl: | 302,0 | 343,6 | 406,0 | 581,0 | 628,0 | | m |
| Doors size m²: | 8 | 9 | 9-10 | 10-11 | 12-13 | 15-16 | m² |
| Preferred bridle length: | 80,0 | 160 | 160 | 160 | 160-240 | 160-240 | m |
| Preferred setback: | 9 | 12 | 13 | 16 | 18 | 23 | m |

*Depending on ocean current, fishing depth, trawling speed, wingend sinkers, headline cable and etc.

**Most Common sizes. Other sizes available.

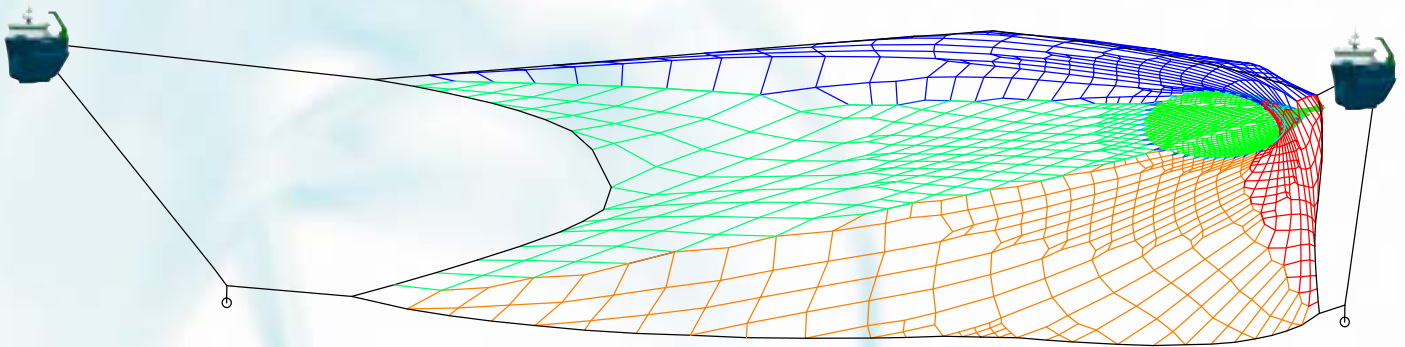
Outstanding results have been achieved using the Gloria SW in North and South Atlantic oceans.

Suitable for a wide variety of fishing grounds,
the Gloria SW Trawl offers Skippers and Trawler owners worldwide, increased catch rates,
larger fish size and increased profits from their operations.

GLORIA®

2SW -Semi Wide

For slower swimming pelagic species
Horizontal opening 2-2,5 times the vertical opening



The Gloria 2SW based on the design of Gloria SW.
 This trawl is designed specially for fishing with two ships.
 The basic structure is similar to the Gloria SW but the wings are different and also stronger ropes in the front part of the trawl.

Gloria 2SW is used for fishing herring, blue whiting and mackerel.

GLORIA® 2SW

For slower swimming pelagic species

Various material types

Helix

PE/PA

Nylex



1792

2048

2432

| | | | | |
|-----------------------------|--------|--------|--------|------------|
| * Opening: | 76 | 87 | 104 | m |
| * Width at sonder: | 170 | 194 | 230 | m |
| Tons per warp at 3.0 knots: | 12 | 14 | 16 | ton |
| Preferred bridle length: | 80+100 | 80+120 | 80+140 | m |
| Preferred setback: | 8 | 9 | 10 | m |

*Depending on ocean current, fishing depth, trawling speed, wingend sinkers, headline cable and etc.

Suitable for a wide variety of fishing grounds, the Gloria 2SW trawl offers skippers and trawler owners in many parts of the world better catches, larger size fish and increased profits from their operations.

GLORIA®

Ramping codends

For different species For Midwater and Bottom trawls

We have wide range of codends that is hauled up the ramp of the ships to the deck for processing.

We produce every meshsize needed for different species. Lately we have been producing more four panel codends for hauling up the ramp since it goes more easy on the fish. Then we use DynIce lines that are shorter than the netting so all the load will go on the lines instead of netting.

To ensure still more quality of fish going up the ramp we produce codends with T90 netting.

T90 means that the netting is turned 90° from the usual netting direction. All of our Mackerel fleet that hauls the codend to the deck is using four panel T90 codends.



Magnet Green



Magnet Yellow



Magnet Compact



Pumping codends

For different species Better quality and handling of the catch

We have wide range of codends (brailers) that is pulled along the ship side and pumped outof.

There is a version for Herring, Mackerel, Capelin, Blue Whiting and Lantern fish available.

Usually the size of catch for these codends are 3-600 tons. Since they are not towed up the ramp the quality of the fish is excellent.

We have now developed T90 codends that give even more quality of fish. T90 means that the netting is turned 90° from the usual netting direction. Those versions are now very popular for Mackerel, Herring and Capelin. The crew that is using these T90 codends reports that the fish is much more alive when the codend is hauled along the side of the ship.

Utzon Braided Nylon



Utzon Twisted Nylon





The Password for better fishing:

GLORIA[®]
Self-Spreading

Enter

- ...wider opening - improve fishing
- ...lower drag but better spread
- ...maintains shape at very slow speed
- ...easy to shoot and haul
- ...vibrates less with less noise
- ...overbraided with protective jacket in different colours for each panel

HAMPIDJAN **GROUP**

www.hampidjan.com

info@hampidjan.is